



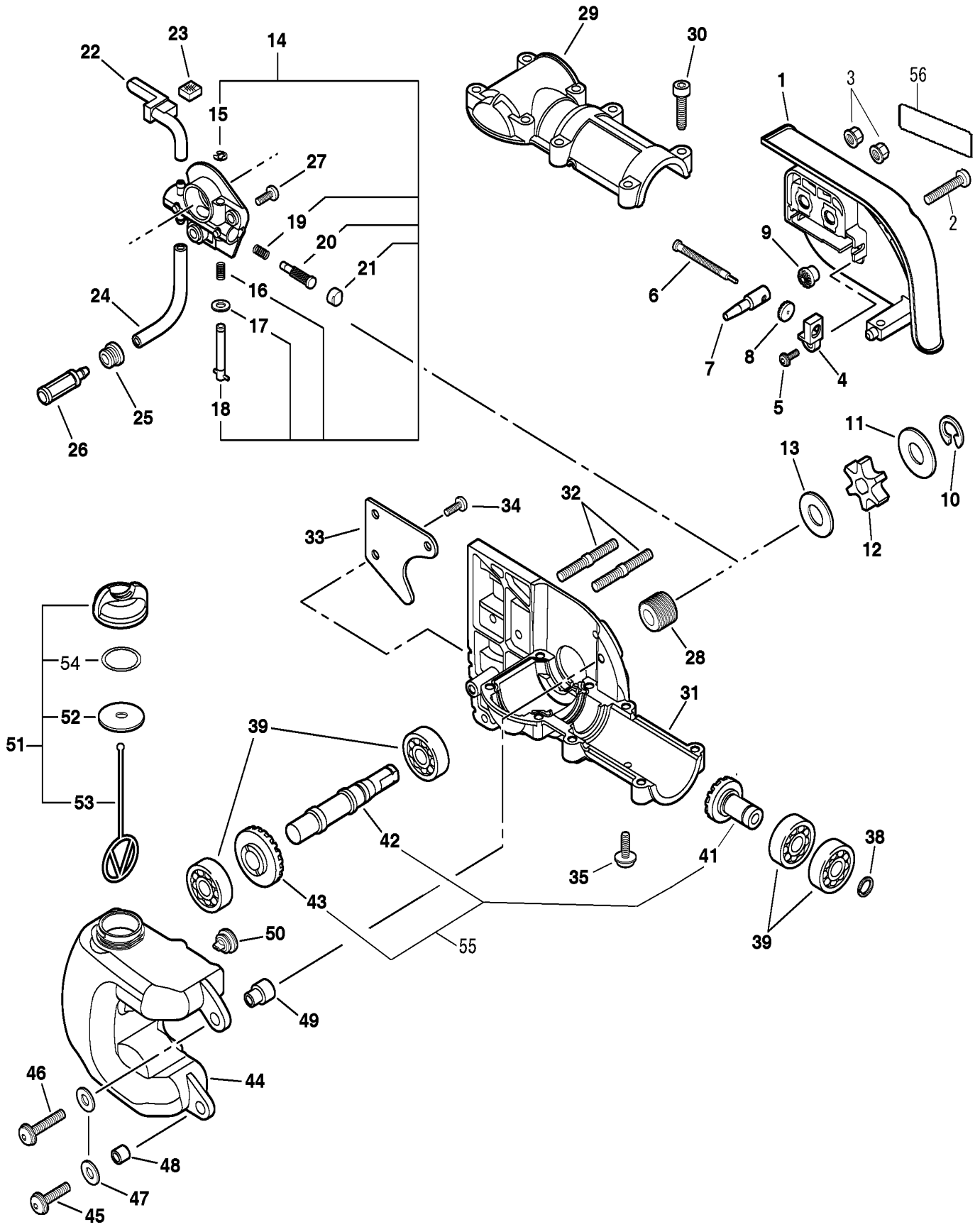
PARTS CATALOGUE

POWER PRUNER ATTACHMENT

999442-00832

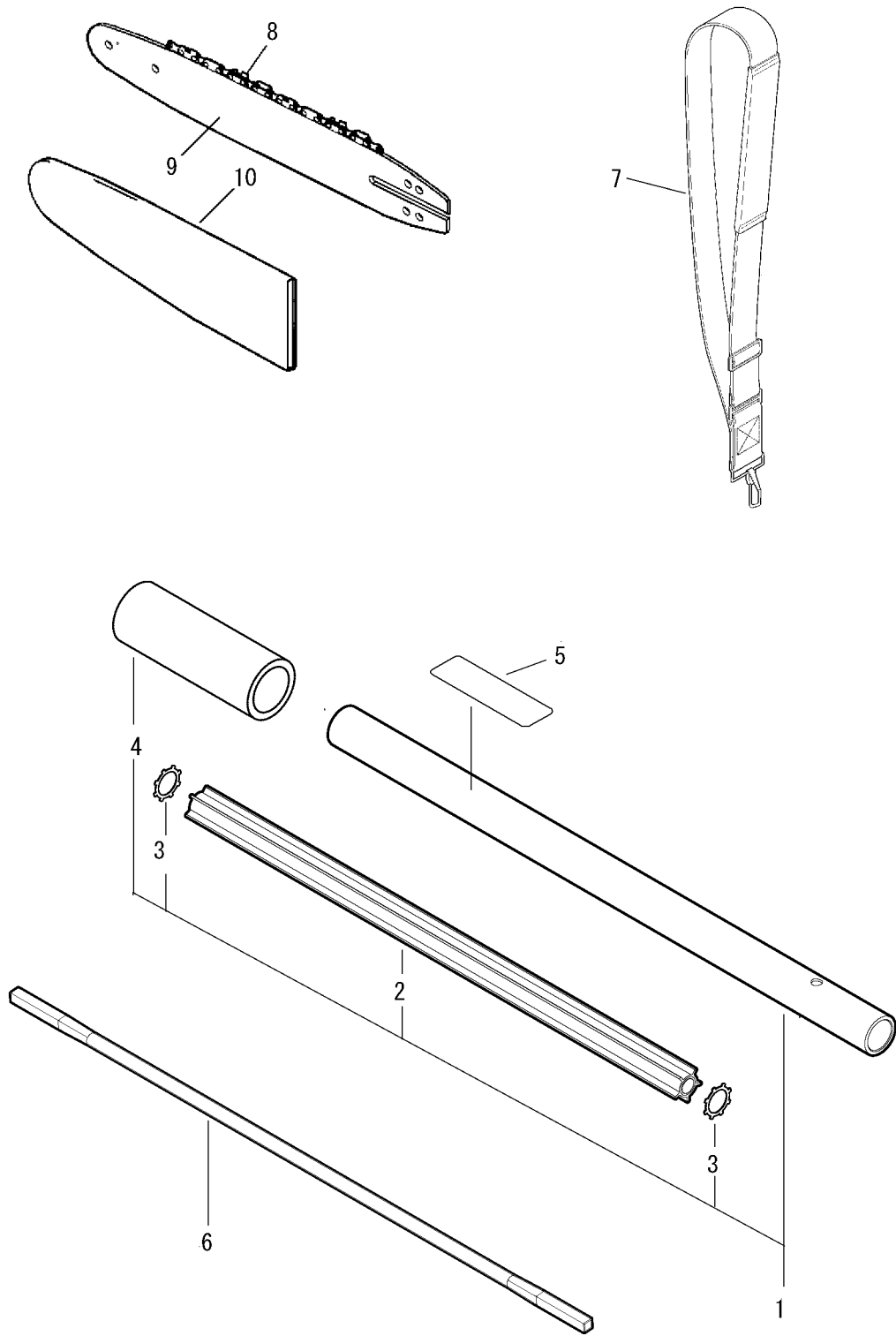
CE

EU PAS PP 1. Gear Case



KEY	LV	PART NUMBER	Q'TY	DESCRIPTION	REMARKS
1		C300-000360	1	GUARD, SPROCKET	PPT-265
2		V253-000180	1	SCREW,5	M5*20 PAN
3		433019-03933	2	NUT, FLANGE 6	6
4		V355-000140	1	COLLAR,8	
5		V252-000040	1	SCREW,4	4*8 PT SCREW
6		V203-000041	1	BOLT,5	
7		C309-000030	1	TENSIONER,CHAIN	
8		V651-000310	1	GEAR,BEVEL	14 TEETH 3.0 SQ.
9		V651-000320	1	GEAR,BEVEL	14 TEETH 10MM LG
10		V583-000090	1	RING	EXTERNAL RING
11		V307-000160	1	WASHER,CIRCULAR	1010.2*29.5*T=1.2
12		C580-000070	1	SPROCKET,DRIVE	
13		175014-39131	1	WASHER, CLUTCH	10.2*24.5*1.2
14		C022-000010	1	OILER,ASM AUTO	
15	+	125327-15130	1	CLIP	
16	+	P022-010670	1	SPRING	
17	+	437029-37330	1	WASHER	
18	+	P022-010680	1	SCREW ASS'Y, ADJUST	
19	+	P022-010660	1	SPRING	
20	+	P022-010650	1	PLUNGER	
21	+	P022-010640	1	CAP, OIL PUMP	
22		V470-000180	1	PIPE	
23		437244-39130	1	PAD, FORM	
24		130110-12330	1	PIPE, IMPULSE	3*6*70L
25		132115-01461	1	GROMMET	
26		436205-02832	1	STRAINER, OIL	
27		V253-000200	2	SCREW,5	M5*10 PAN MS
28		437063-38330	1	GEAR, WORM	
29		C531-000030	1	CASE,GEAR	
30		V253-000240	8	SCREW,5	M5*25 PAN MS
31		C531-000430	1	CASE,GEAR	LOWER
32	+	V224-000040	2	BOLT,STUD 6	15MM*19MM M6
33		C649-000140	1	HOOK	BRANCH HOOK
34		V253-000200	3	SCREW,5	M5*10 PAN MS
35		V253-000200	1	SCREW,5	M5*10 PAN MS
38		900706-00012	1	CIRCLIP 12	WR-12
39		94052-06001	2	BEARING BALL	PEER LLU,DDU 2RS
55		P021-015340	1	GEAR, SHAFT KIT	
41	+	V651-000210	1	GEAR,BEVEL	MG 0600.2259
42	+	C534-000430	1	SHAFT, GEAR	
43	+	V651-000201	1	GEAR,BEVEL	MG 0600.2259
44		C200-000080	1	TANK, OIL	
45		V253-000230	2	SCREW,5	M5*20 PAN MS
46		V253-000240	1	SCREW,5	M5*25 PAN MS
47		900603-00005	2	WASHER 5	5.5*12*0.8
48		131045-28230	2	COLLAR	
49		V354-000010	1	COLLAR,6	
50		131314-06320	1	VALVE, CHECK	
51		P021-005591	1	FUEL CAP ASY	
52	+	900720-00018	1	O-RING 18	P-18
53	+	A365-000050	1	CONNECTOR,CAP	
54	+	436012-37830	1	GASKET, CIRCULAR	
56		X502-000600	1	LABEL,ECHO	48MM*15MM + ECHO

EU PAS PP 2. Main Pipe, Guide Bar & Chain, Harness



KEY	LV	PART NUMBER	Q'TY	DESCRIPTION	REMARKS
1		610206-24561	1	PIPE, MAIN	
2	+	610217-24560	1	LINER, FLEXBLE	
3	+	900038-00100	2	WASHER,EXTERNAL	
4	+	351012-21560	1	GRIP, HANDLE	
5	+	890160-22661	1	LABEL, CAUTION	PVC FILM
6		610013-24561	1	SHAFT, FLEXIBLE	
7		C062-000100	1	HARNES,SHOULDER	
8		X221-000030	1	CHAIN,SAW	
9		X121-000060	1	BAR,GUIDE 25	
10		X490-000060	1	SCABBARD,CHAIN	

Index

Parts Number	Key No.	Parts Number	Key No.	Parts Number	Key No.
A365-000050	1 - 53	436012-37830	1 - 54		
C022-000010	1 - 14	436205-02832	1 - 26		
C062-000100	2 - 7	437029-37330	1 - 17		
C200-000080	1 - 44	437063-38330	1 - 28		
C300-000360	1 - 1	437244-39130	1 - 23		
C309-000030	1 - 7	610013-24561	2 - 6		
C531-000030	1 - 29	610206-24561	2 - 1		
C531-000430	1 - 31	610217-24560	2 - 2		
C534-000430	1 - 42	890160-22661	2 - 5		
C580-000070	1 - 12	900038-00100	2 - 3		
C649-000140	1 - 33	900603-00005	1 - 47		
P021-005591	1 - 51	900706-00012	1 - 38		
P021-015340	1 - 55	900720-00018	1 - 52		
P022-010640	1 - 21	94052-06001	1 - 39		
P022-010650	1 - 20				
P022-010660	1 - 19				
P022-010670	1 - 16				
P022-010680	1 - 18				
V203-000041	1 - 6				
V224-000040	1 - 32				
V252-000040	1 - 5				
V253-000180	1 - 2				
V253-000200	1 - 27				
V253-000200	1 - 34				
V253-000200	1 - 35				
V253-000230	1 - 45				
V253-000240	1 - 30				
V253-000240	1 - 46				
V307-000160	1 - 11				
V354-000010	1 - 49				
V355-000140	1 - 4				
V470-000180	1 - 22				
V583-000090	1 - 10				
V651-000201	1 - 43				
V651-000210	1 - 41				
V651-000310	1 - 8				
V651-000320	1 - 9				
X121-000060	2 - 9				
X221-000030	2 - 8				
X490-000060	2 - 10				
X502-000600	1 - 56				
125327-15130	1 - 15				
130110-12330	1 - 24				
131045-28230	1 - 48				
131314-06320	1 - 50				
132115-01461	1 - 25				
175014-39131	1 - 13				
351012-21560	2 - 4				
433019-03933	1 - 3				



KIORITZ CORPORATION

7-2 SUEHIROCHO 1-CHOME, OHME, TOKYO 198-8711, JAPAN
PHONE: 81-428-32-6118. FAX: 81-428-32-6145.

200807 No.36-001(650583)